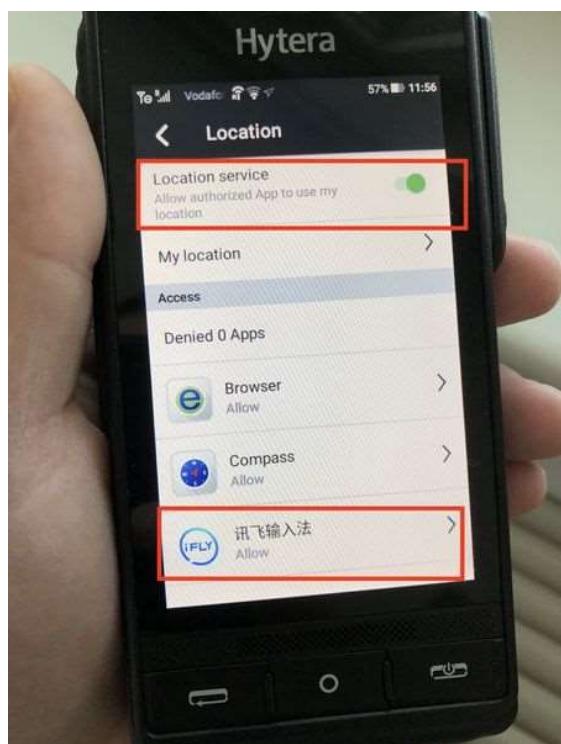


# Hytera PDC760 无热点连接 MMDVM 网络

所有资料均来自网络，掘墓人 BD4AMS 整理，目前已在 PDC760 各个版本测试都已正常，PDC680 上还在努力，感谢 BD7MQB, BG4ECN, BG9HXO, BI4UNP 的大力支持和参与！

首先必须联网，终端要能正常访问网页，并开启定位功能，如果没有这个定位选项的，可以在软件中开启。实测讯飞输入法不必安装。



去 [brandmeister.netwrok](http://brandmeister.netwrok) 配置 ARPS 启用定位实时更新，切记配置 Hotspot security。

Brand	Hytera / Kenwood	Language	English
APRS Interval	600 sec	APRS Callsign	BD4AMS
Hytera radios only: If you use this option it activates the Network Managed Mode. This will overwrite your CPS settings. In case you want to keep using your CPS settings you have to select OFF and reprogram your radio if necessary.			
APRS Icon	<input checked="" type="checkbox"/>	In Call GPS	<input checked="" type="checkbox"/>
APRS Text	Shanghai		
AirSecurity / TOTP <input checked="" type="checkbox"/>			
Hotspot Security <input checked="" type="checkbox"/>			
Password	Enter new Hotspot Password		
Save		Restore defaults	

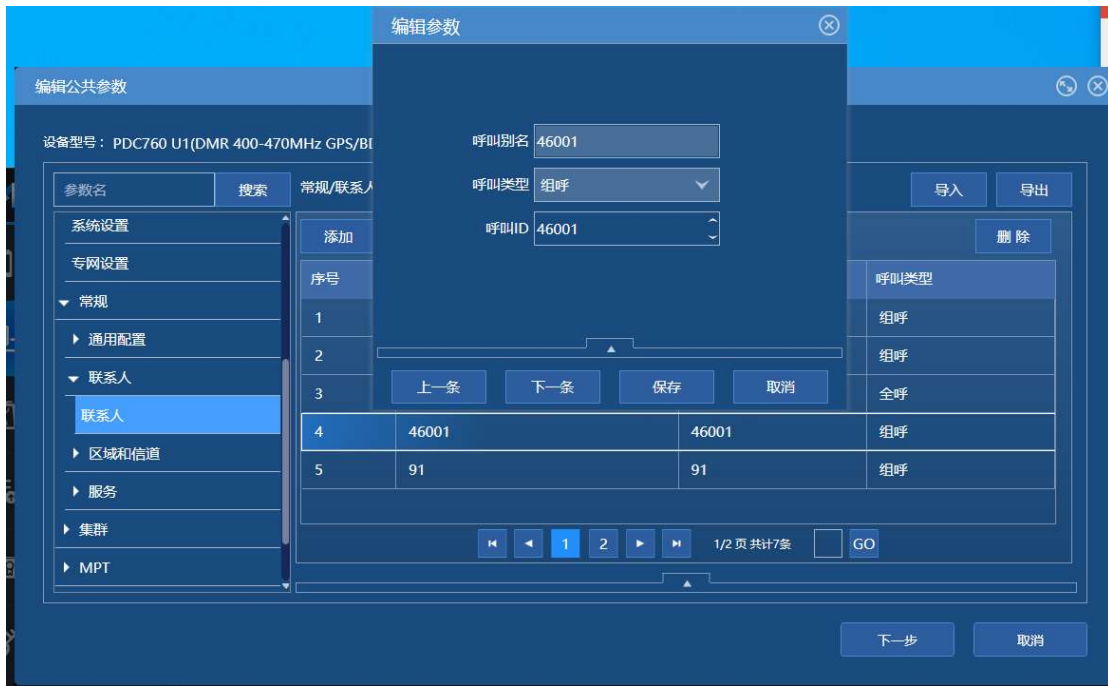
## 1. 开启 Roip, 开启定位服务器



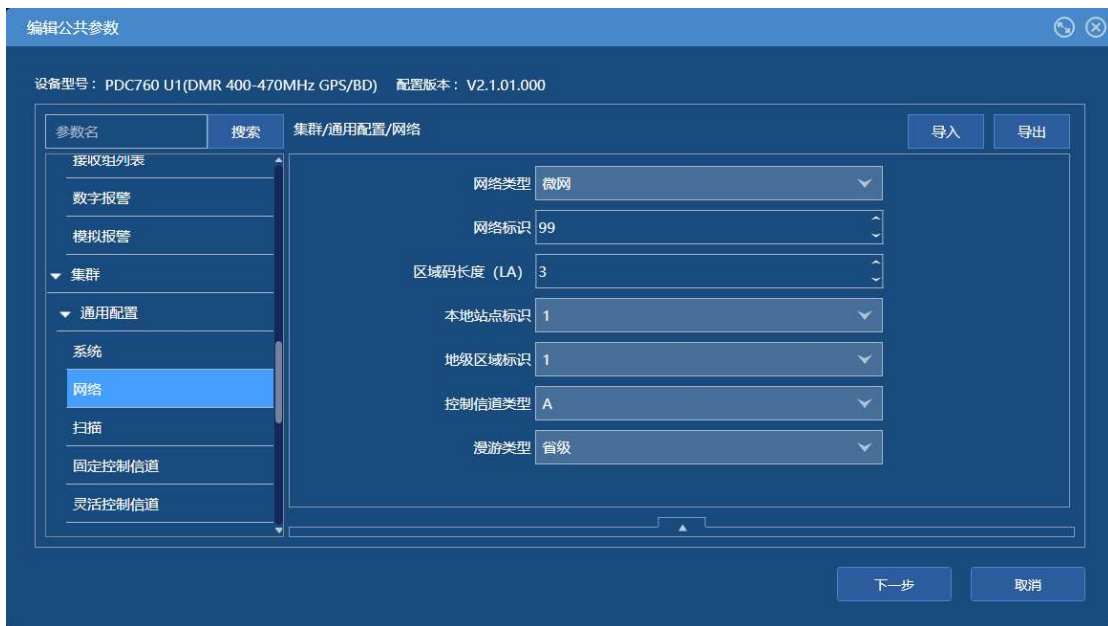
## 2. 允许发起组呼



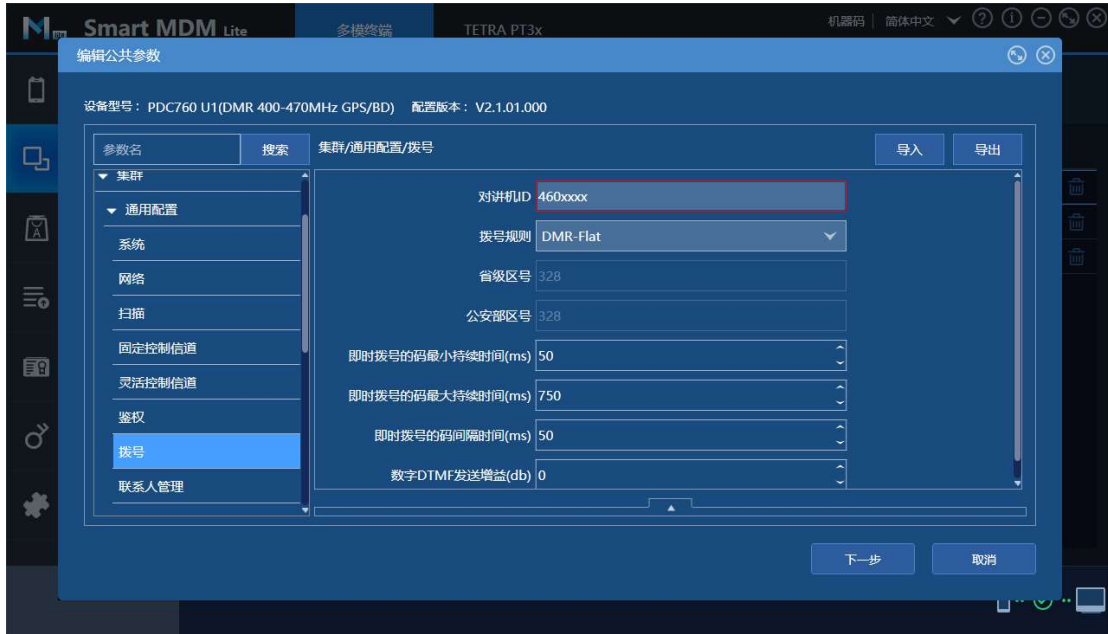
## 3. 添加数字联系人, 比如 46001



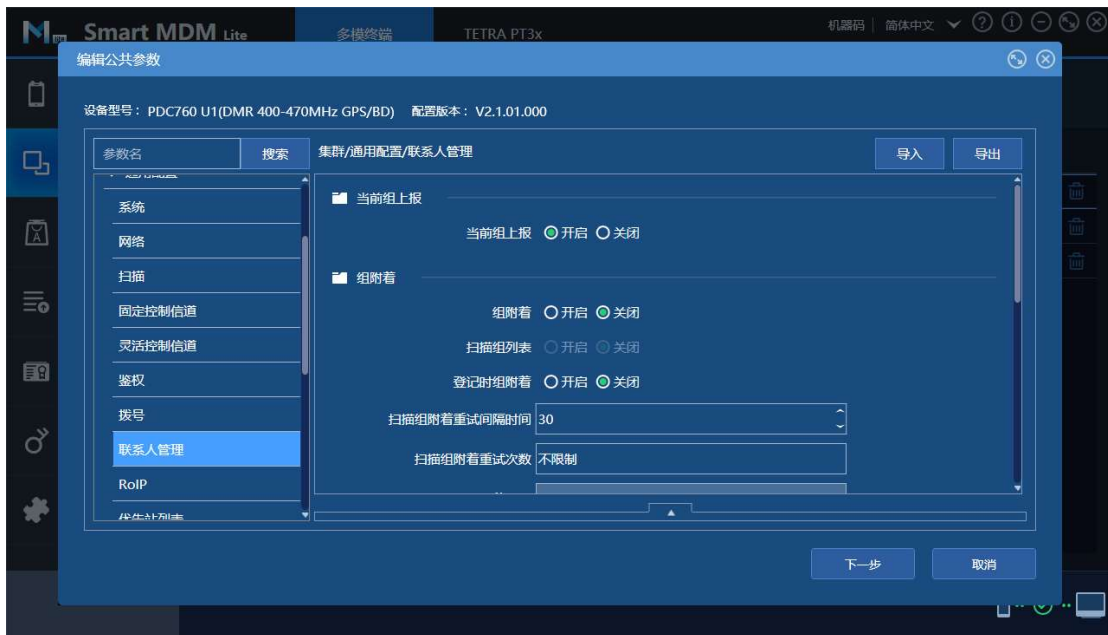
#### 4. 集群网络设置成微网 (好像任何都可以, 有待测试)



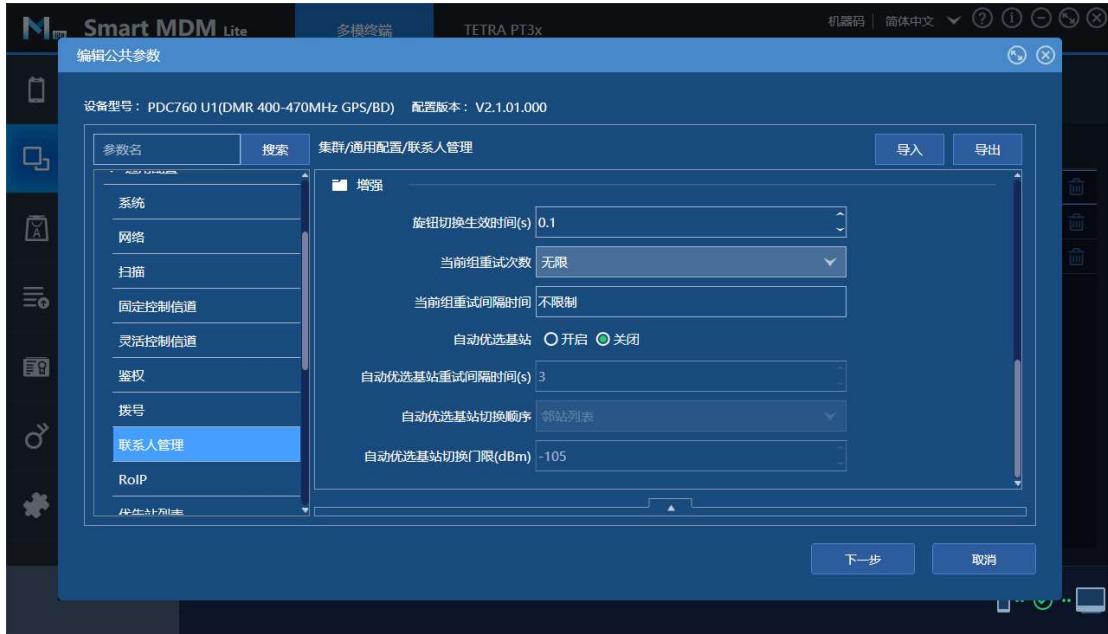
#### 5. 集群拨号设置



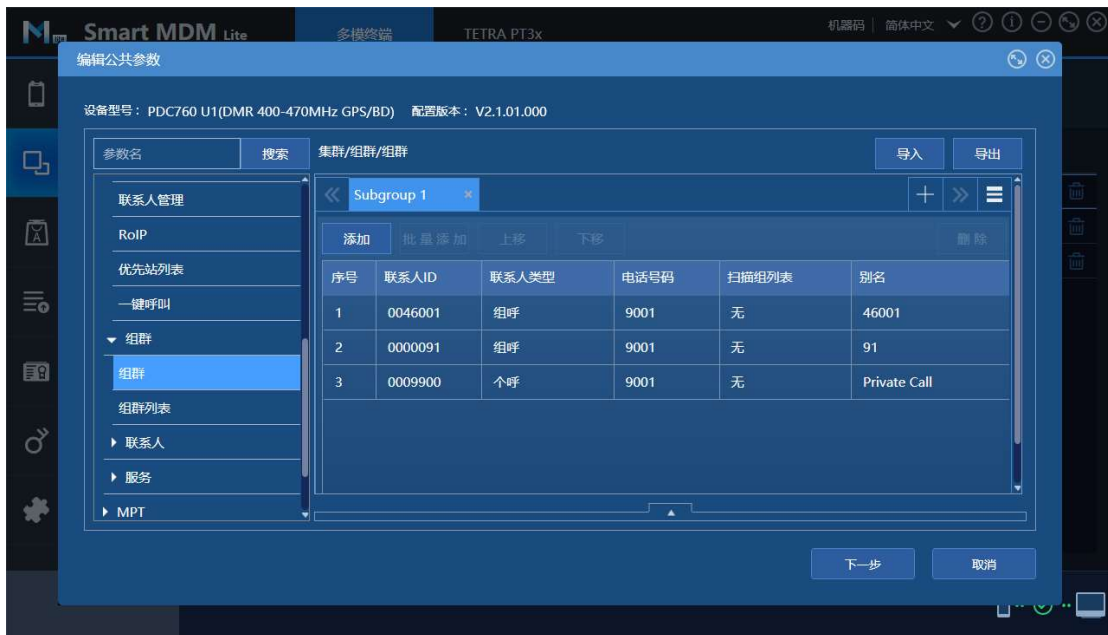
## 6. 开启当前上报组



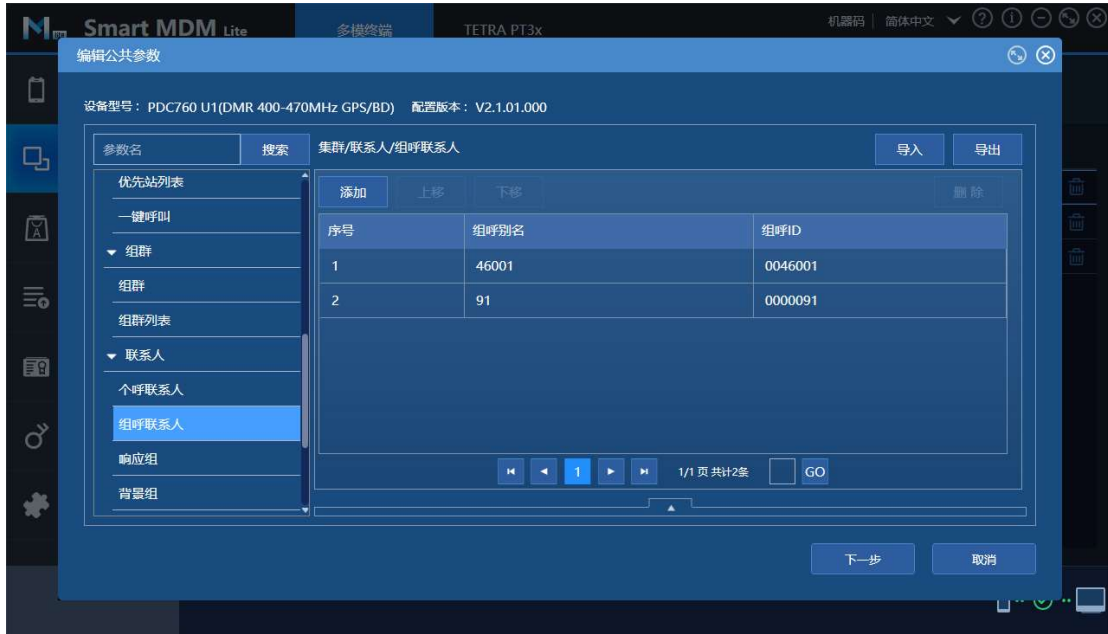
## 7. 增强选项设置



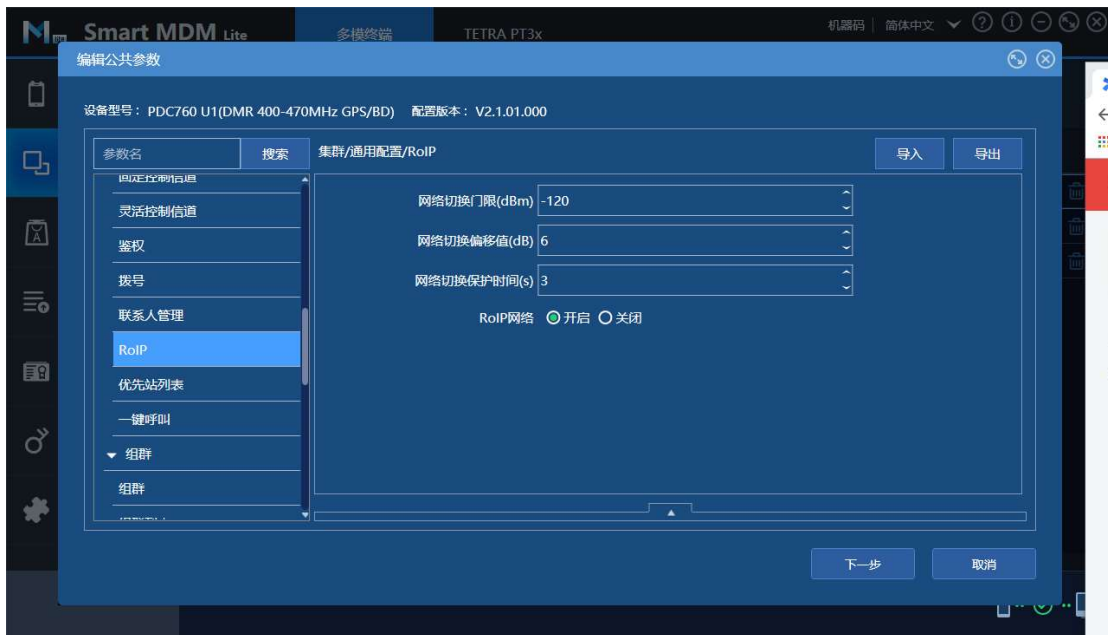
## 8. 最群管理添加联系人



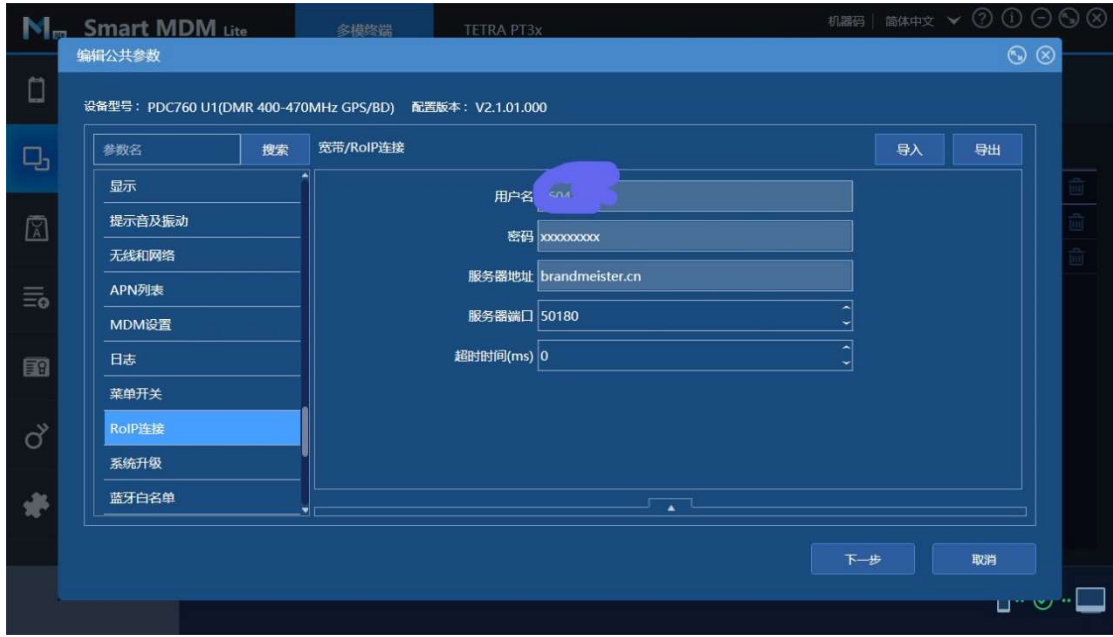
## 9. 添加组呼联系人



## 10 开启 RoIP



## 11. 添入用户名 DMRID, 密码和服务器地址端口等



## 12. 写频测试